

## Remote-Autoclavable-Sampler (RAS) Comparison to Remote-Slit-Sampler (R2S)

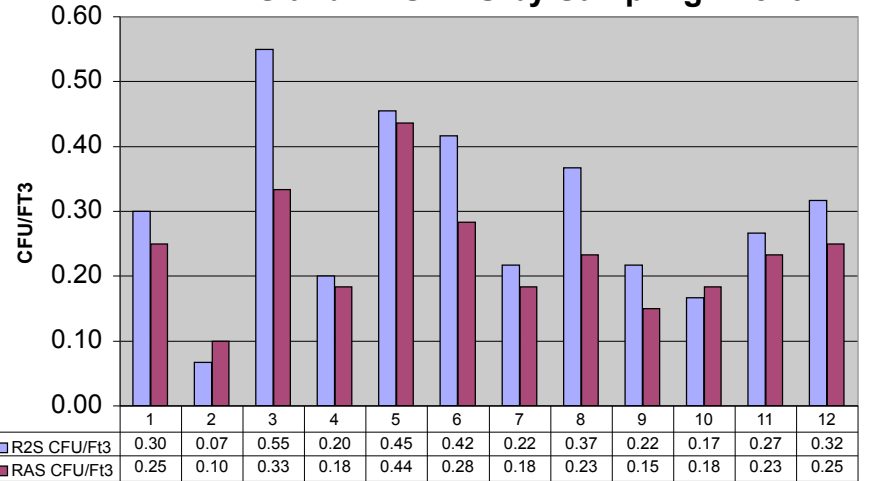
### Test Results

| Total ft <sup>3</sup><br>Sampled | Test<br>Date | R2S<br>Total CFU | RAS<br>Total CFU | R2S<br>CFU/Ft <sup>3</sup> | RAS<br>CFU/Ft <sup>3</sup> | RAS<br>% Recovery |               |
|----------------------------------|--------------|------------------|------------------|----------------------------|----------------------------|-------------------|---------------|
| 60                               | 6-Oct        | 18               | 15               | 0.30                       | 0.25                       | 83.33             |               |
| 60                               | 6-Oct        | 4                | 6                | 0.07                       | 0.10                       | 150.00            |               |
| 60                               | 7-Oct        | 33               | 20               | 0.55                       | 0.33                       | 60.61             |               |
| 60                               | 7-Oct        | 12               | 11               | 0.20                       | 0.18                       | 91.67             |               |
| 55                               | 7-Oct        | 25               | 24               | 0.45                       | 0.44                       | 96.00             |               |
| 60                               | 7-Oct        | 25               | 17               | 0.42                       | 0.28                       | 68.00             |               |
| 60                               | 12-Oct       | 13               | 11               | 0.22                       | 0.18                       | 84.62             |               |
| 60                               | 12-Oct       | 22               | 14               | 0.37                       | 0.23                       | 63.64             |               |
| 60                               | 12-Oct       | 13               | 9                | 0.22                       | 0.15                       | 69.23             |               |
| 60                               | 12-Oct       | 10               | 11               | 0.17                       | 0.18                       | 110.00            |               |
| 60                               | 12-Oct       | 16               | 14               | 0.27                       | 0.23                       | 87.50             |               |
| 60                               | 12-Oct       | 19               | 15               | 0.32                       | 0.25                       | 78.95             |               |
| <b>Total CFU</b>                 |              | <b>210.00</b>    | <b>167.00</b>    | <b>Combined</b>            | <b>3.54</b>                | <b>2.82</b>       | <b>79.70%</b> |

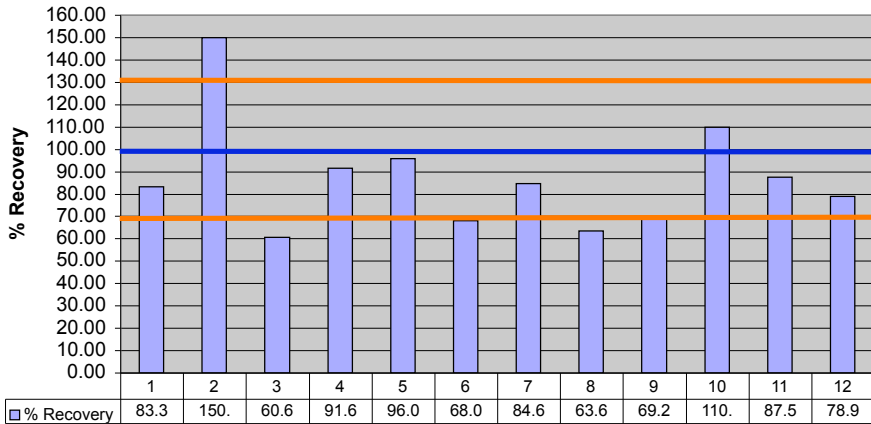
**Notes:**

- 1) Testing was performed in a lab environment with 95% ashray rated filtration.
- 2) The R2S and RAS were approximately 12" apart on a lab counter with the controller unit approximately 8-10 feet away.
- 3) Testing occurred over 3 different days
- 4) Testing performed with RAS Prototype 1

### R2S and RAS CFU by Sampling Event



### RAS Percent (%) Recovery Compared to R2S (Ideal is 100% +/-30%)



### R2S and RAS CFU/ft<sup>3</sup> by Sampling Event

